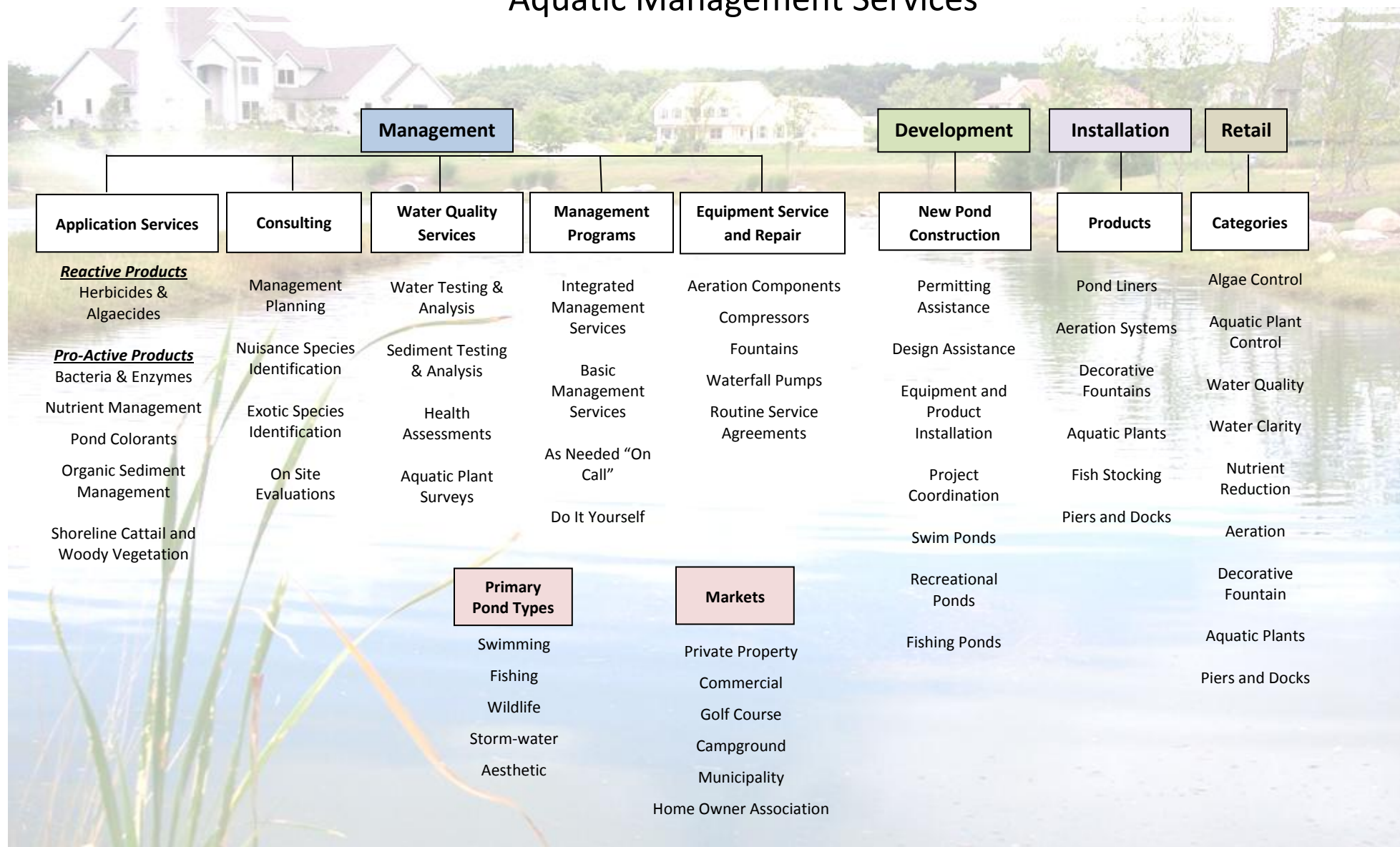


## Aquatic Management Services



### **Who is Wisconsin Lake & Pond Resource?**

Our owners' aquatic service career began in 1997. WLPR is a lake and pond management specialty company focusing on developing and managing aquatic resources. WLPR employees consist of a team of biologists, equipment and service technicians, installers and marketing /administrative staff.

### **What does Wisconsin Lake & Pond Resource do?**

We focus on design, consultation, construction, and management of recreational lakes and ponds. Most of our clients fall within 6 industries served: Private property, commercial, home owner association, campground, municipal, and golf course with pond sizes ranging from ¼ to 5+acres. We offer services ranging from design and consulting of new pond projects, pond liner installations, aeration and fountain installation, pond treatments and management services, fish stocking, aquatic plant installations and docks.

### **Where do we operate our business?**

Consultation, design and construction of synthetically lined ponds occur in all of Wisconsin, northern Illinois and the Upper Peninsula of Michigan. Management primarily is done in the southeastern part of Wisconsin, although we have clients throughout the state of Wisconsin.

### **When do we do this work?**

Actual on-site management occurs seasonally in an approximate 6 month window. During the winter months our biologist and staff review the prior season's activity and plan the budgets for the upcoming year.

### **Why are we in the pond business?**

For the enjoyment of fishing, swimming, aesthetics, back yard BBQ's, parties and to promote **FUN** water activities.

***"We Use the Tools That We Know Work"***

~ Owner Cory Zickert

### **Our Mission Statement**

"To preserve our aquatic resources by providing professional management services for a diverse clientele utilizing environmentally acceptable tools and techniques."