

Pond Health Assessment

Get Started Correctly! A health assessment of a pond is a great way to understand the pond's ecosystem and how to improve water quality. The assessment provides a baseline to water quality parameters, aquatic plant community, pond characteristics, and understanding of problematic areas. Health assessments consist of five limnological tests to include a report of the data collected and an explanation of the results and the current health of the pond.

- **Bathymetric map**

- Water depth profile
- Max depth
- Contour map
- Average depth

- **Sediment profiles**

- Depth of soft sediment
- Composition

- **SeScript water samples**

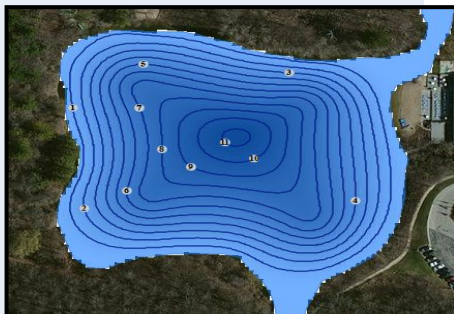
- Nutrient content
- Water quality parameters

- **Aquatic Plant survey**

- Species identification
- Density and location
- Exotic vs native

- **Dissolved oxygen & temperature recordings**

- Oxygen temperature profile
- Thermocline
- Anoxic zones



Pricing

\$750 per pond up to one acre
\$500 each additional pond

*All assessments include report, raw data,
lab results, and explanations*

SeSCRIPT*

Analysis

Water is the most abundant compound on Earth, yet faces some of the most significant threats of any natural resource. Implementing advanced monitoring, assessment and management technologies is essential to preserving and restoring our valuable water resources.

Water quality is a measure of the characteristics and condition of water. Water quality standards, protect such beneficial uses of water such as sustaining fish and other aquatic life, swimming and providing drinking water for people, livestock and wildlife. Water quality parameters vary seasonally and are influenced by numerous internal and external factors. For example, a trend of increasing phosphorus levels over time can document a growing human health and ecological concern with a shift to less desirable and potentially toxic cyanobacteria (blue-green algae) species.

Why monitor? Routine assessment of key water quality parameters provides valuable information about the health of a waterbody. Analysis and documentation of water quality parameters provide data necessary to prompt and assess management activities, establish and achieve ecological benchmarks and comply with regulatory thresholds.

SeSCRIPT Analysis incorporates EPA analytical methods and site specific prescription services for improved management of algae and water quality. SeSCRIPT analysis and reporting is rapid, accurate and economical.

Water Quality Analytical Services

Water Quality Baseline Bundle

An analysis of baseline water quality parameters.

The WQ Bundle provides quantitative analysis of baseline water quality parameters used in the assessment and management of water resources.

EPA standard methods are utilized to quantify the following water parameters; alkalinity, conductivity, dissolved oxygen, hardness, pH, phosphorus (total and free reactive) and turbidity. Results are available within 7 days of sample receipt.

Water Quality Baseline Plus Bundle

Baseline water quality analysis plus complete nutrient assessment.

This bundle includes the analysis covered in the WQ Baseline Bundle plus chlorophyll *a*, nitrates, nitrites and total nitrogen for a complete nutrient assessment. Reporting also includes a trophic index indicator. Results available within 7 days of sample receipt.

Water Quality Individual Bundle

You select the water quality parameters to quantify.

Individually select the water quality parameters to meet your water management objectives.



N7828 Town Hall Rd
Eldorado, WI 54932

Toll Free: 866-208-0724
www.WisconsinLPR.com

Office: (920) 872-2032
Fax: (920) 872-2036